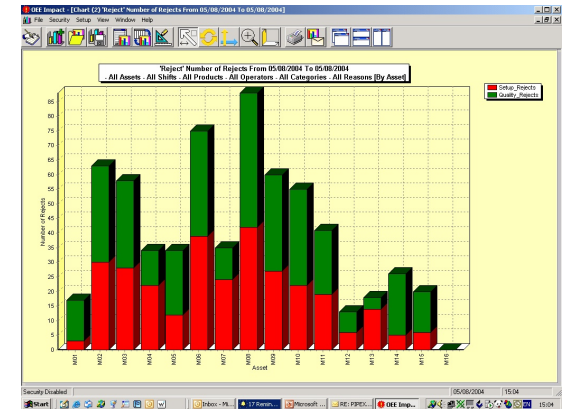
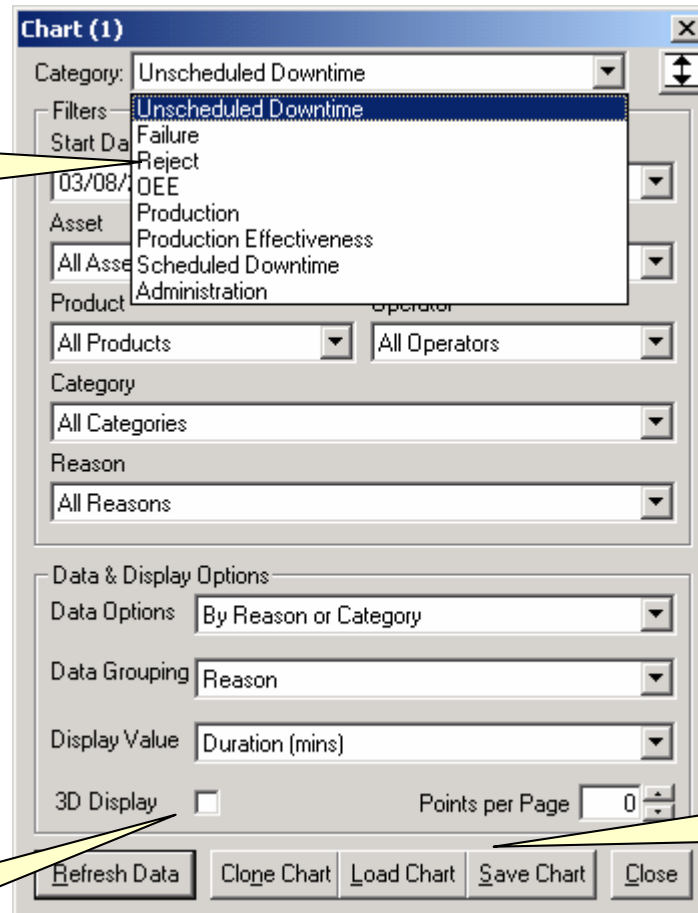


- Over 200 pre-defined reports as standard
- Total flexibility on reporting
  - Graphical charts
  - Text reports
- Fast data retrieval
- Export data to nearly any file or program type
  - Get reports that drop into Word or Excel
- Send reports to printers, via emails and through other mediums.



The following slides provide an overview of the power offered by OEE IMPACT's comprehensive reporting tool.

If you want to try OEE IMPACT for a limited time *free of charge* contact our sales team and ask for your trial copy - then you can see the true power of OEE IMPACT Reporting...



The screenshot shows a 'Chart (1)' window with the following fields and options:

- Category: **Unscheduled Downtime**
- Filters: **Unscheduled Downtime** (dropdown menu open showing: Failure, Reject, OEE, Production, Production Effectiveness, Scheduled Downtime, Administration)
- Start Date: 03/08/2004
- Asset: All Assets
- Product: All Products
- Operator: All Operators
- Category: All Categories
- Reason: All Reasons
- Data & Display Options:
  - Data Options: By Reason or Category
  - Data Grouping: Reason
  - Display Value: Duration (mins)
  - 3D Display:
  - Points per Page: 0
- Buttons: Refresh Data, Clone Chart, Load Chart, Save Chart, Close

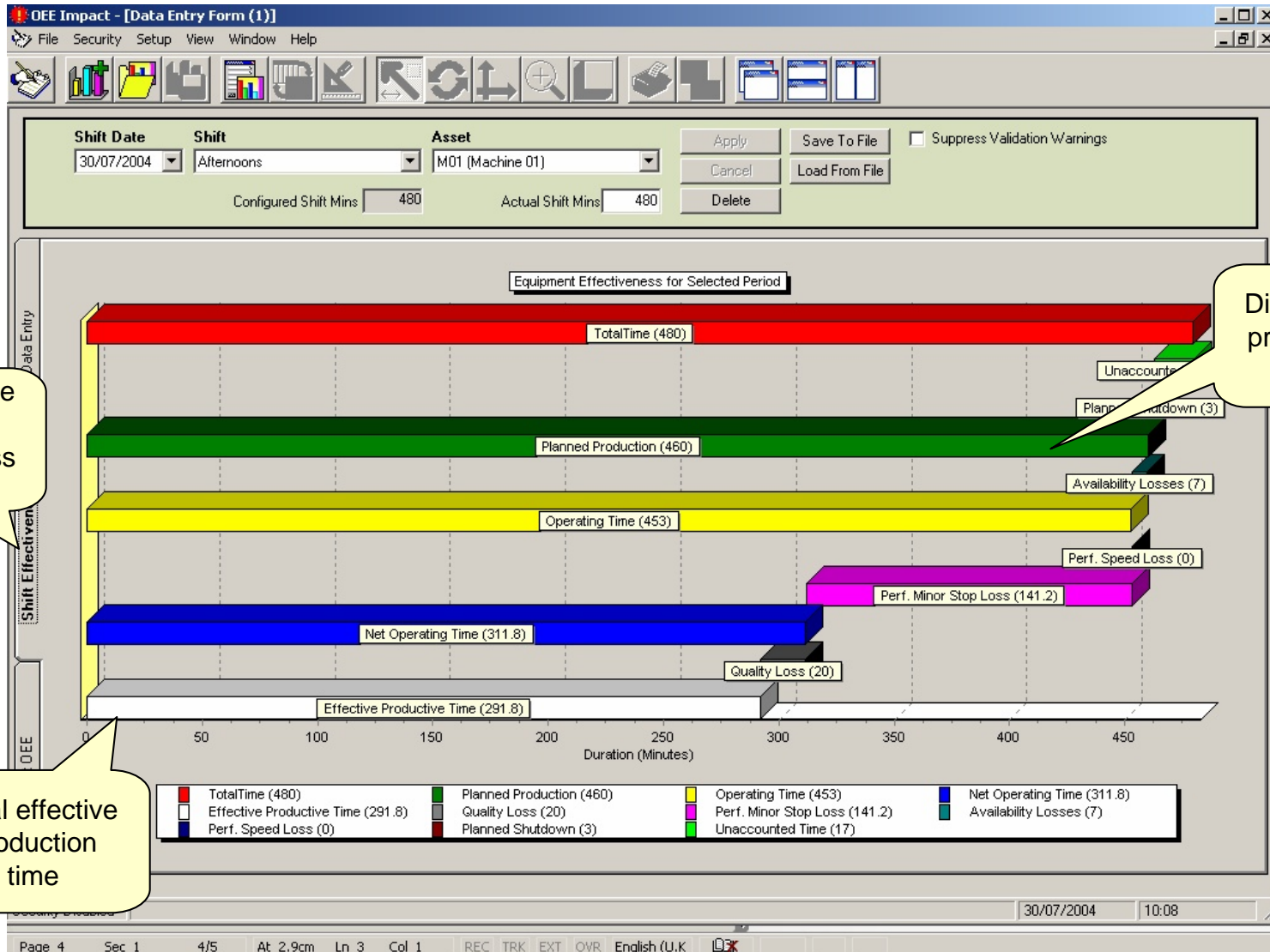
Selection of report type

Report Filter provides the facility to simply drill down into the information

Selection of display options: trends, bar graphs, data grids, units of display. Group data by Machine, shift, product, operator

Open and save commonly used reports

Display reports in 3D



Selecting the shift effectiveness Tab

Diagram of production losses

Final effective production time

Control Dynamics, Inc – USA Distributor / Software Integrator for Gemba Solutions  
 4246 Corporate Exchange Drive, Hudsonville, MI 49426  
 (616) 896-2008 [www.cdi-mi.com](http://www.cdi-mi.com)



**OEE Impact - [Data Entry Form (1)]**

File Security Setup View Window Help

Shift Date: 30/07/2004 | Shift: Afternoons | Asset: M01 (Machine 01)

Apply Save To File Suppress Validation Warnings  
Cancel Load From File  
Delete

Configured Shift Mins: 480 | Actual Shift Mins: 480

---

### Analysis Figures

Total Shift Duration = 480 mins  
Unaccounted Time = 17 mins  
Scheduled Downtime = 3 mins

Planned Production Time = 460 mins  
Unscheduled downtime = 7 mins  
No. Unscheduled downtimes = 4  
Operating Time = 453 mins  
**Availability = 98.5 %**

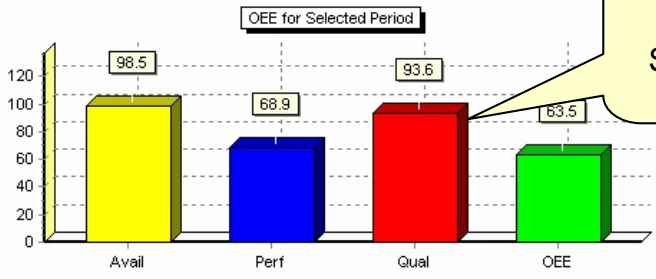
Theoretical (Standard) Units = 521.3 units  
Theoretical (Speed) = 521.3 units  
Recovered Time = 312 mins  
Reduced Speed Lost Time = 0 mins  
Minor Stop Lost Time = 141.2 mins  
Reduced Speed Lost Units = 0 units  
Minor Stop Lost Units = 161.3 units  
**Performance = 68.9 %**

Total units produced = 360 units  
Total good units = 337 units  
Total reject units = 23 units  
Lost Time due to rejects = 20 mins  
**Quality = 93.6 %**

Effective Productive Time = 291.8 mins

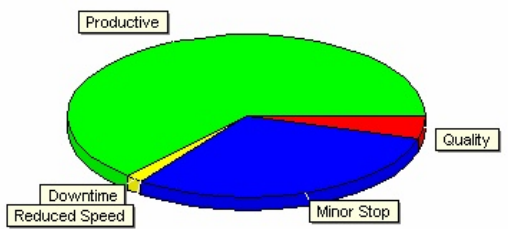
**OEE = 63.5 %**

### OEE for Selected Period



Category	Value
Avail	98.5
Perf	68.9
Qual	93.6
OEE	63.5

### OEE Losses for Selected Period



Loss Category	Value
Productive	291.8
Downtime	7
Minor Stop	141.2
Quality	20
Reduced Speed	0

Shift OEE performance

Production Units

OEE Summary